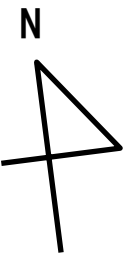


Osaka City University Access Map



to Tennoji・Senri Chuo
Subway Midosuji Line

Abiko
Station
(subway)

*From Abiko Station, the exit No.4
is convenient.

to Tennoji・Osaka

JR Hanwa Line

Abiko
Kannon
Temple

Yosami
Municipal
Elementary
School

Post office
Convenience
store

Abiko Street

Convenience
store

Incubator

JR Sugimoto cho
Station

Convenience
store

Human
Life
Science

Science
OCAMI

Engineering

Media
Center

Guest
House

KKC

Abiko Minami
Municipal
Junior High
School

Sumiyoshi
Sports
Center

JR Hanwa Freight Line

to Nakamozu

Convenience
store

Tanaka Memorial Hall

Economics
Business

COOP・Cafeteria

Asaka Central Park

The Yamato River

Asaka
Station

200m
500 feet

to Wakayama・Kansai
International Airport

Nearest Stations :

- Sugimoto-cho Station (JR Hanwa line)
- Abiko Station (Subway Midosuji line) It's about ten-minute walk .

Access from Main Terminals :

《from Kansai International Airport》

Take an express "Kansai Airport Rapid Service" (called Kanku Kaisoku) of JR line and get off at Sakai-shi Station to take a local train bound for Tennoji, which comes on the same platform. Sugimoto-cho Station is two stops from Sakai-shi Station. (around 1 hour)

《from Shin-Osaka Station》

- ① Take Midosuji Line(subway) bound for Nakamozu and get off at Abiko Station (around 30 minutes)
- ② Go to Osaka Station by JR Kyoto line and take JR Loop Line to change trains at Tennoji Station. From Tennoji Station, take a local train(JR Hanwa Line) to get to Sugimoto-cho Station (around 1 hour).